

Moving CrypKey Instant protected products is possible, given CrypKey Instant's ability to transfer licenses between computers.

Although as a distributor you are not typically using the license transfer feature, your customers may find it very useful. Consequently, the capability of CrypKey Instant contributes to the salability of your product. Reassuringly for you, if your clients start with one license, they end with one license; a license transfer is not a duplication of any type.

Licenses can be transferred using either of the following methods:

- direct: move a license from one local or networked directory to another
- floppy disk: move a license from one PC to another, via floppy disk, when the two PCs are not networked

1.1 Direct License Transfers

Direct license transfers move any type of license from one location on your PC to another.

The **Transfer To Directory** command requests a directory path to an existing, unlicensed copy of the same product on your client's hard drive, before transferring the license from the source directory to the target. This target directory must either be local to the source directory or connected by a network serviced by a CrypKey Instant network driver.

Example

You want to move a program with a valid fixed license from `C:\temp` to `C:\apps\bingo`.

Procedure

1. Copy the program to `C:\apps\bingo`.

2. Open the application in C:\temp. A splash screen similar to the following appears:

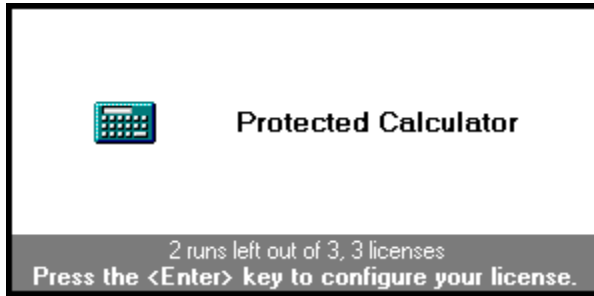


Figure 1: Protected Application Splash Screen

The splash screen remains displayed only briefly and then is replaced by the regular application-opening window.

3. While the splash screen is displayed, press **ENTER**, to configure the application license. CrypKey Instant displays the following window:

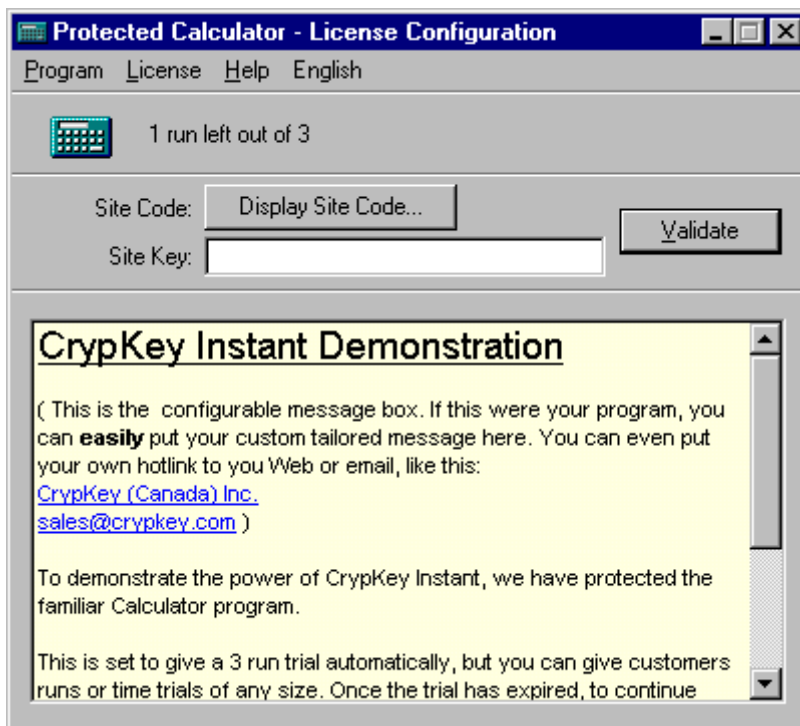


Figure 2: Application License Configuration Window

4. In the above window, click the **License** menu option. The window now appears as follows:

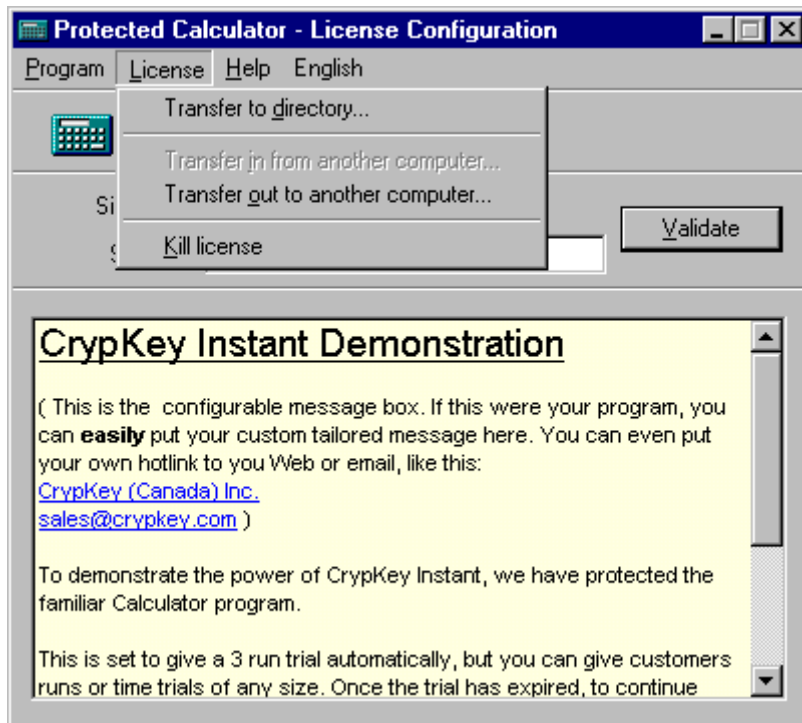


Figure 3: License Commands Popup Window

5. In the above window, click the **Transfer To Directory** command.

CrypKey Instant displays the following window:

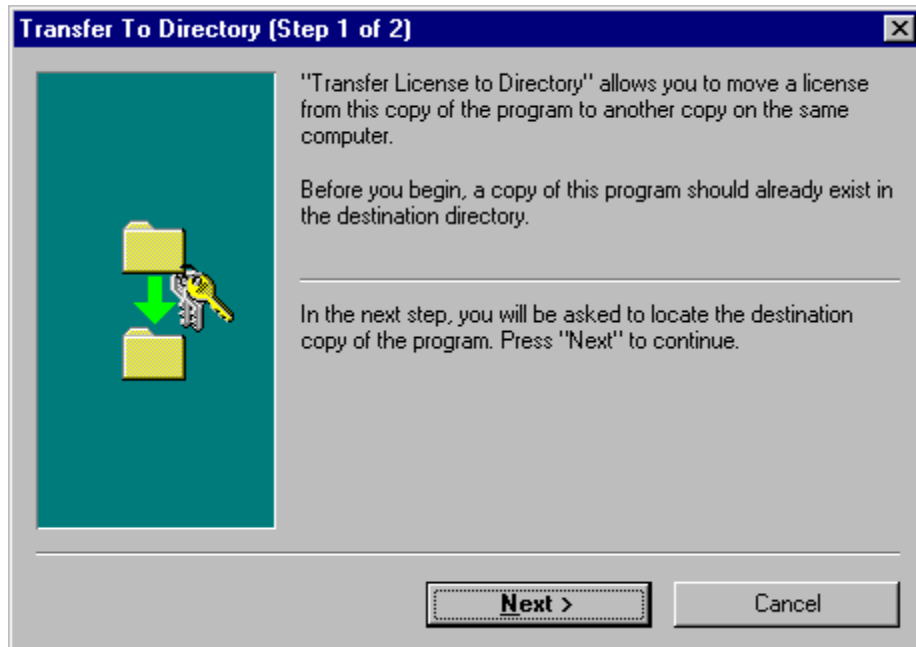


Figure 4: Transfer to Directory Window

- In the above window, click **Next**. CrypKey Instant displays the following window:

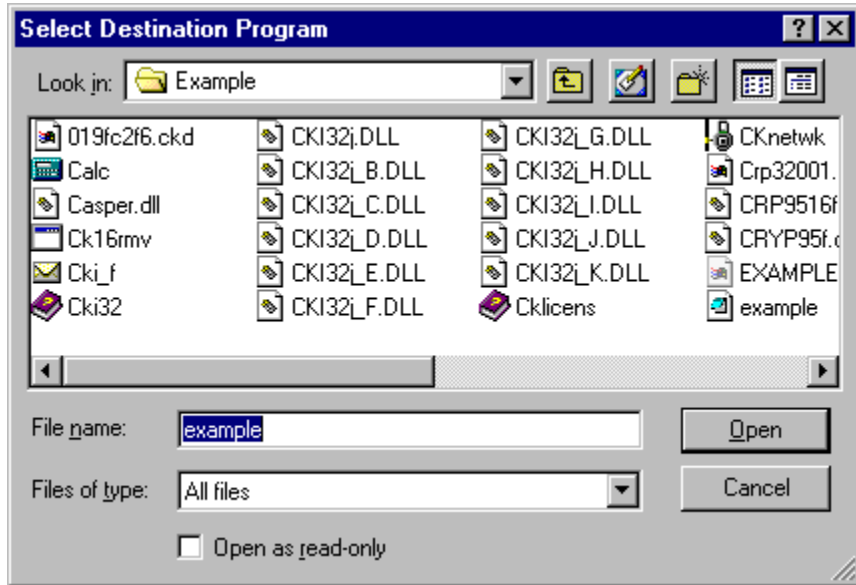


Figure 5: Select Destination Program Window

- In the above window, navigate to the `C:\apps\bingo` directory, select the copied program filename, and press **ENTER**.

The program copy in `C:\apps\bingo` has the license that was previously assigned to the original program in `C:\temp`.

1.2 Floppy Disk License Transfers



This type of operation transfers a license from an existing authorized copy of an application on one computer to an unauthorized copy of the product on a second computer.

The transfer process does not jeopardize your license in any way and is completely secure because the floppy disk is registered to a specific PC in a specific location. This ensures the license can only be transferred to the target PC you specify.

Example

You want to transfer the license for the *Calculator* example program from PC-1 to PC-2.

Procedure

1. Ensure that you have an authorized copy of the application on PC-1, an unauthorized copy of the application on PC-2, and a floppy disk inserted into PC-2.

Note: as indicated by Step 2, your first operation is on the *unauthorized* computer (i.e., PC-2).

2. Start the program on PC-2. The program's opening window is shown below:

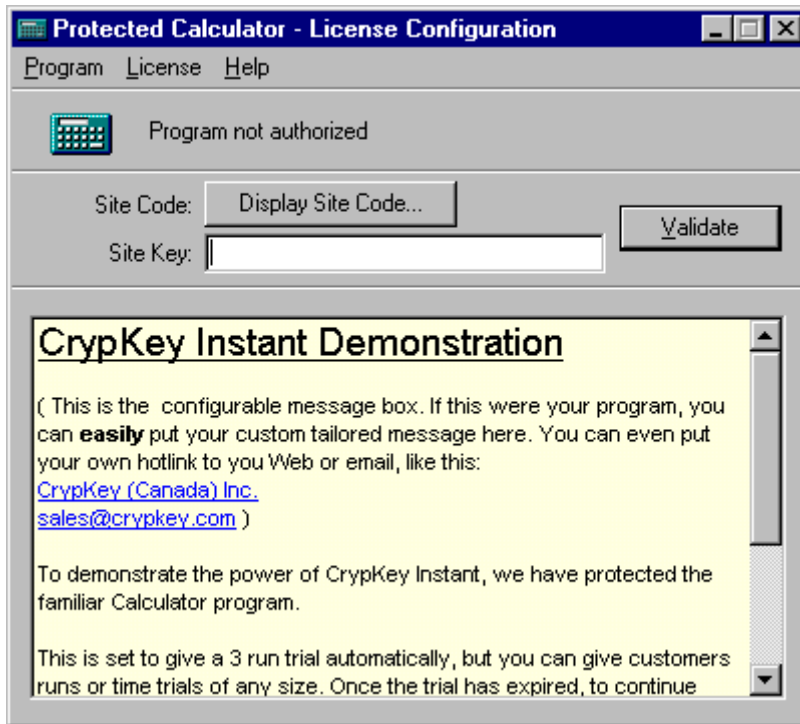


Figure 6: Unauthorized Program running on PC-2

3. In the above window, click the **License** option to display the **Transfer in from another computer** command, as shown below:

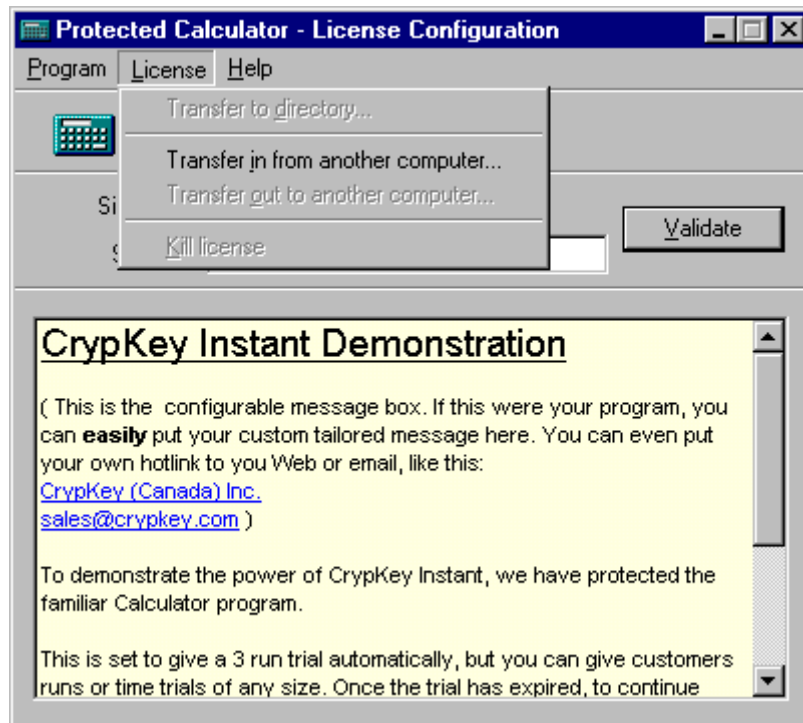


Figure 7: “Transfer in...” Command

4. In the above window, click the **Transfer in from another computer** option. The system displays the following window:

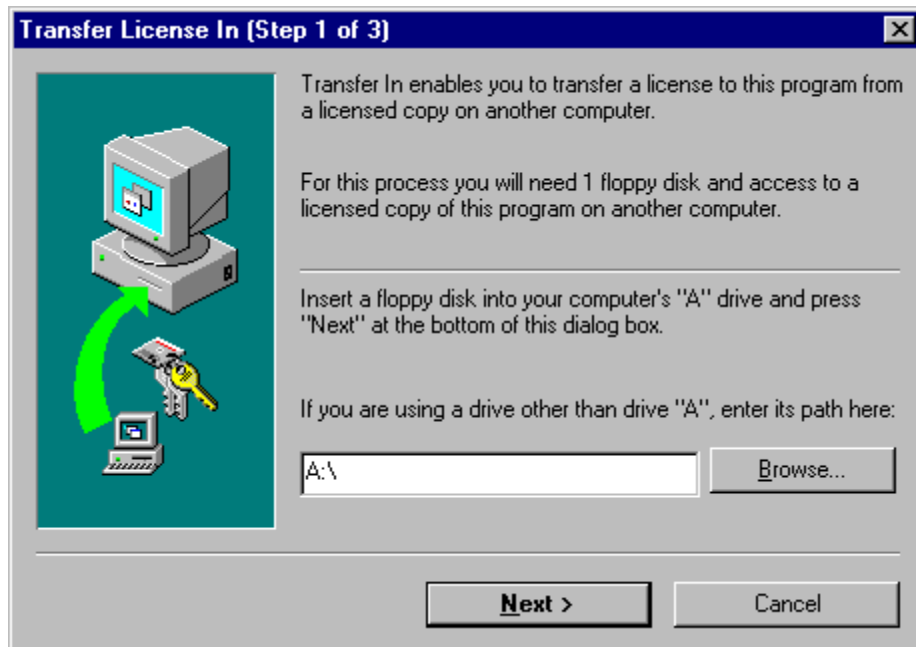


Figure 8: "Transfer License In" Window (Step 1)

5. In the above window, use the **Browse** button if necessary to supply the floppy disk path, then click **Next**. The program imprints its registration on the floppy disk and the system displays the following window:

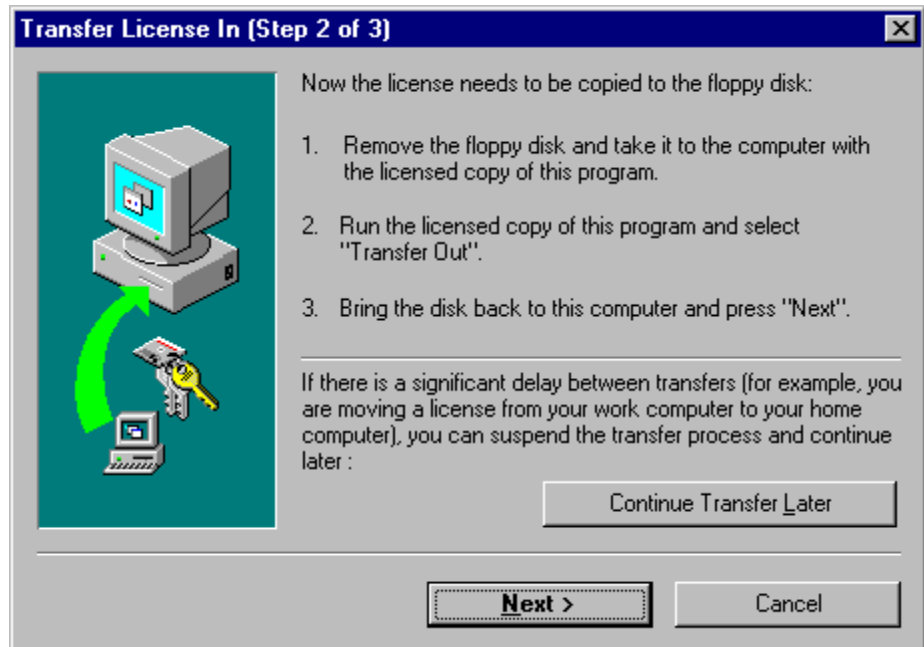


Figure 9: “Transfer License In” Window (Step 2)

6. If you need to close the PC-2 program while you work with the PC-1 program, click the **Continue Transfer Later** button in the above window. The system displays the following popup message:

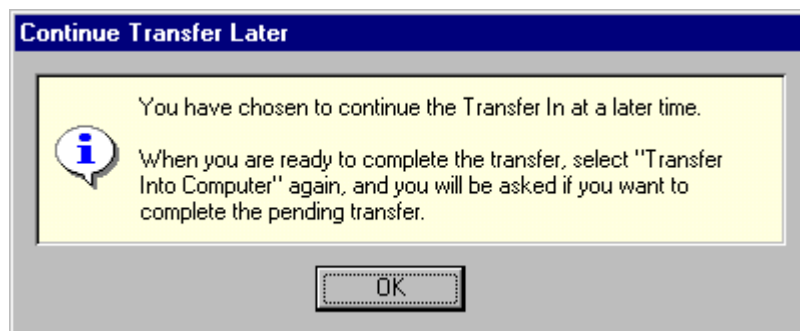


Figure 10: Continue Transfer Later Popup Window

7. Click **OK** to acknowledge the above popup.
8. Remove the floppy disk from PC 2, and insert it into PC 1.
9. Start the program on PC 1, and click the **License** button as shown below:

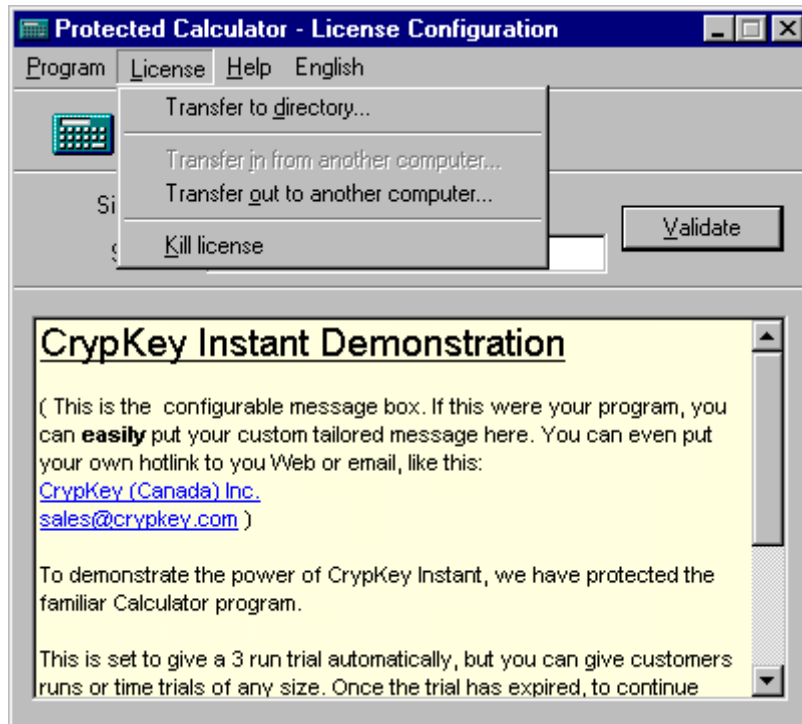


Figure 11: Program on PC-1: “Transfer Out” Command

10. In the above window, click the **Transfer out to another computer** option. The system displays the following window:

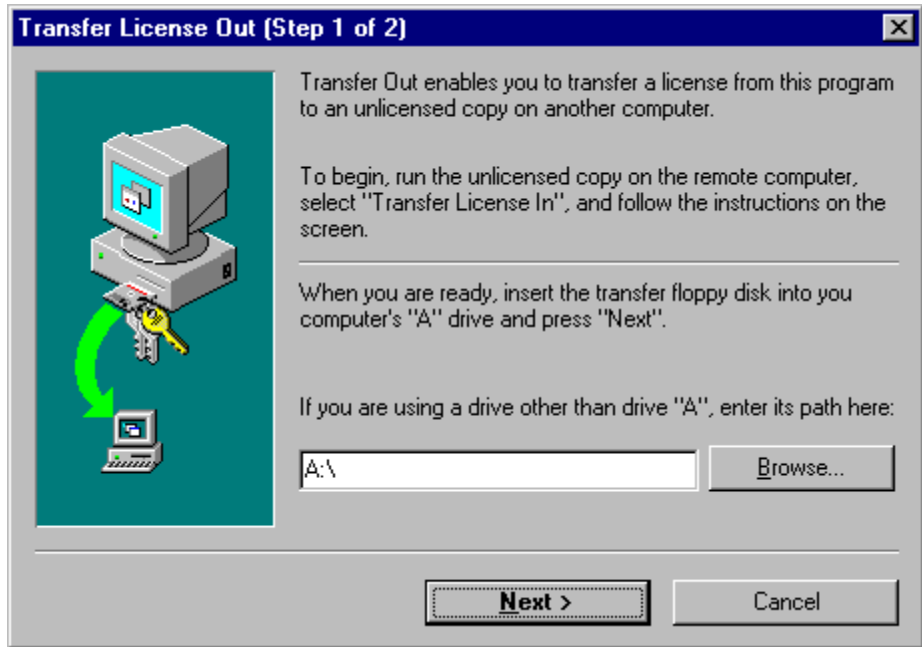


Figure 12: "Transfer License Out" Window (Step 1)

11. In the above window, use the **Browse** button if necessary to supply the floppy disk path, then click **Next**. The program reads the registration imprint file and then writes a matching file to the floppy disk, decrementing the license count at the source or discontinuing it (if it is a single user license).
12. Remove the floppy disk from PC-1, and return it to PC 2.

13. Resume the program on PC-2.

- If you did **not** exit from the program in Step 6, proceed to **Step 14**.
- If you exited the program in Step 6, the following window appears when you start the program again:

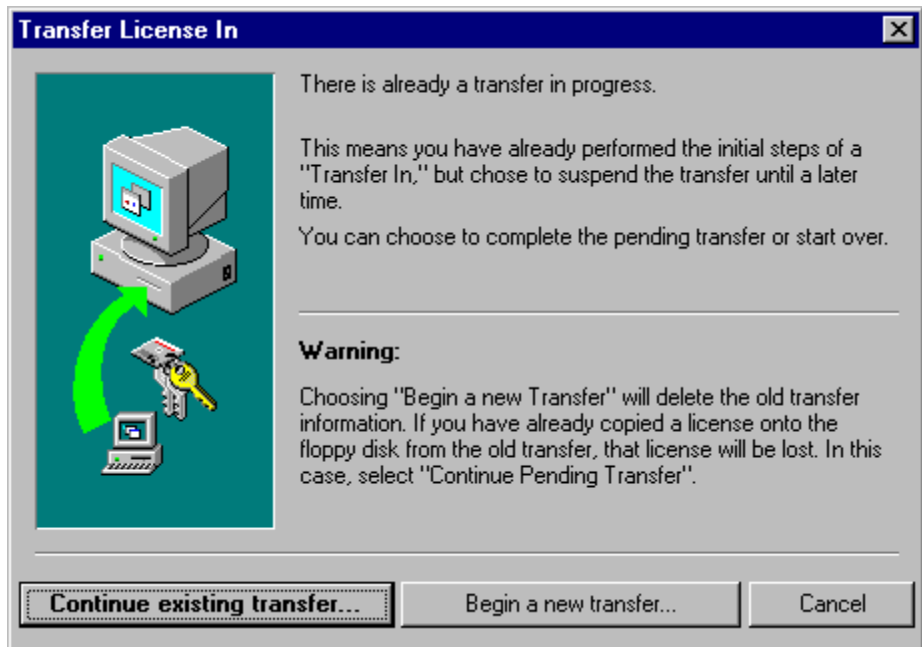


Figure 13: Transfer in Progress Window

The above window simply advises you that you have previously initiated a license transfer. To continue this operation, click **Continue existing transfer** in the above window. The following window is displayed:

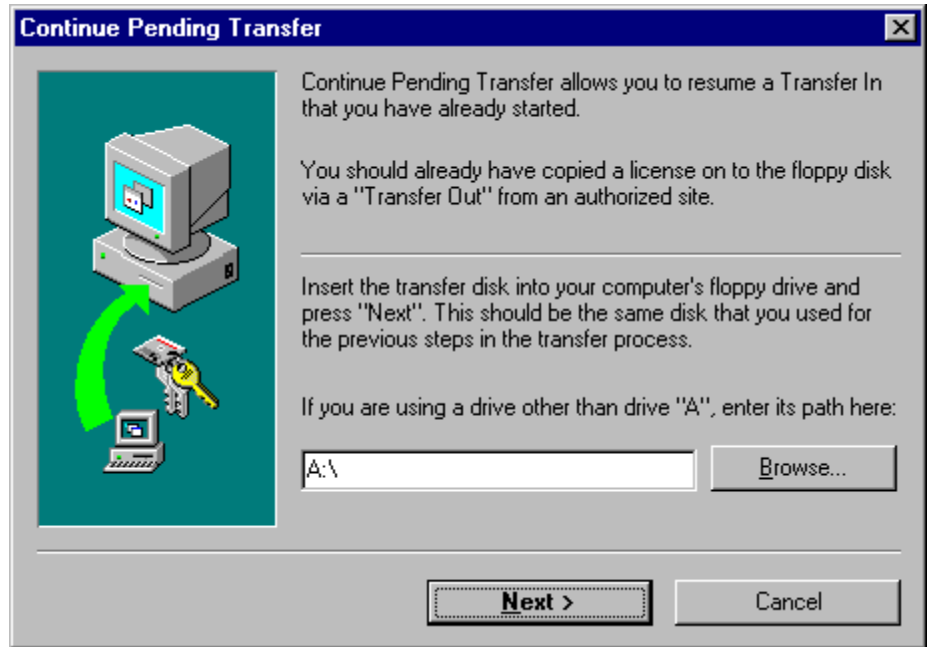


Figure 14: Continue Pending Transfer Window

14. If you did **not** exit the program on PC-2, the program window appears as follows:

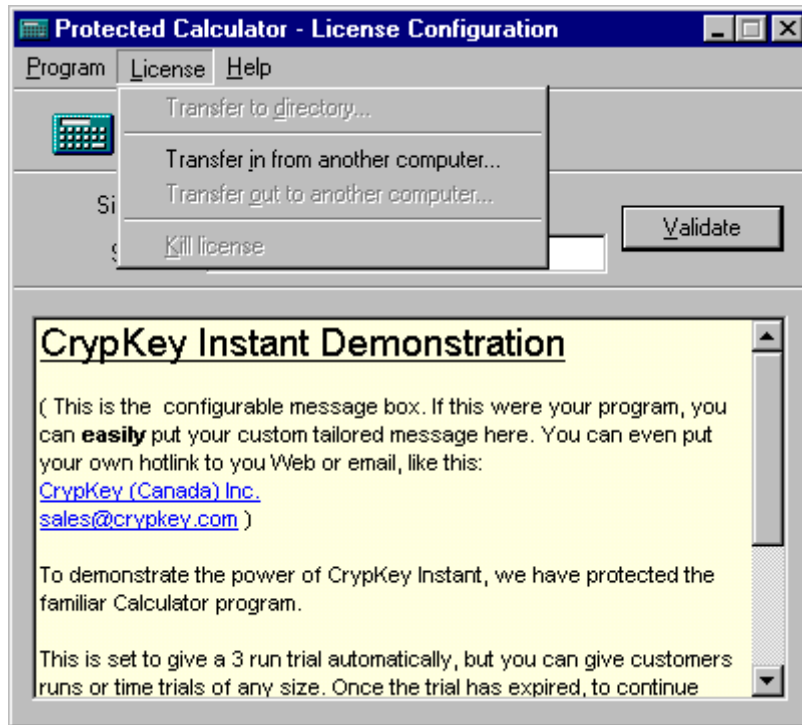


Figure 15: Window resuming operation of program on PC-2

In the above window, click **Transfer Into Computer** to complete the transfer. The system displays the Continue Pending Transfer window, shown in Figure 14.

15. Click **Next** in the Continue Pending Transfer window. The following window appears, indicating that the transfer is complete:



Figure 16: “Transfer License In” Window (Step 3)

16. Click **Finish**. The License Configuration window on PC-2 appears, showing that you are authorized to use it.